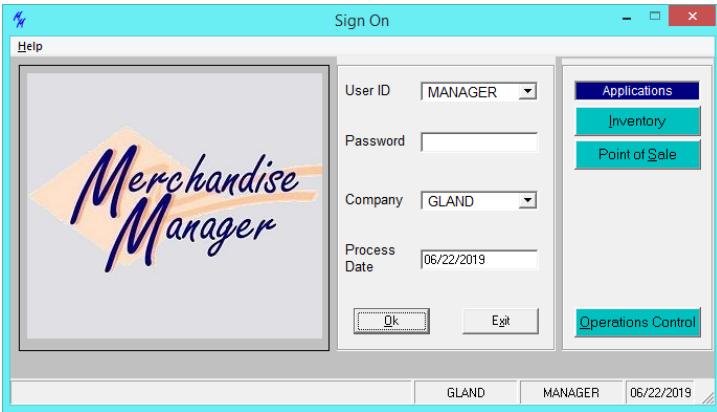


Merchandise Manager

POS and Inventory Software

Spartan Software, Inc.



Now Includes

Tobacco discounts interfaced with Scan Data

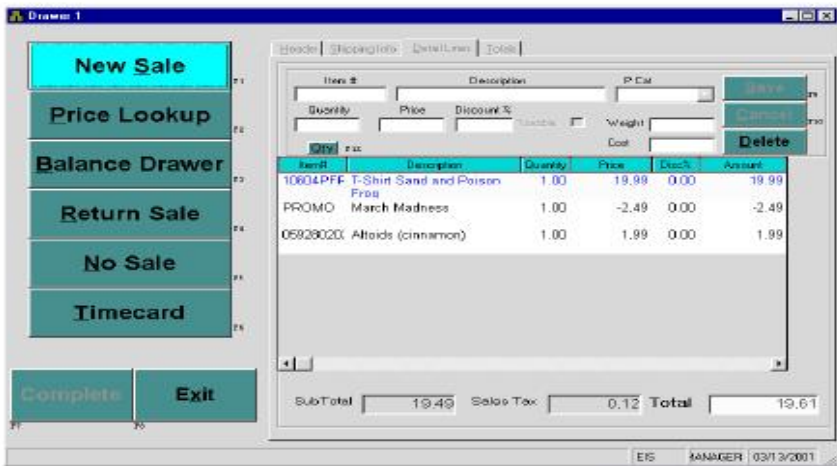
Additional loyalty discounts interfaced with Scan Data

Customer loyalty rewards program to increase foot traffic

Seamless credit card interface to accept swipe / chip / Apple Pay / Android Pay

The POS software is designed to allow each cashier to sign in to one screen and be able to handle all of their daily responsibilities from that screen. Enter sales and returns, lookup prices, balance their drawer, enter a no sale and even use the screen to clock in and out of their timecard.

POS Features



- Speedy checkout
- Scanning of UPC's, PLU's or SKU's and Barcodes
- Splitting tenders (unlimited tenders, even multiple credit cards)
- Price lookups (scan the product # or enter any type of search criteria)
- Promotional Sales (Date ranges, quantity limits, quantity discounts, customer contract pricing)
- Line discounts or whole sale discounts
- Customer account tracking
- Barcoded receipts to expedite and verify a return
- X-Out and Z-Out (Blind Z-Out optional)
- Misc. Payouts and Receive on account
- Timecard clocking in and out by any employee at any computer
- Ship to addresses
- Multiple pricing levels
- Trend tracking (Customer zip codes, phone #'s etc.)
- Salesperson tracking for commissions
- Detailed history tracking of every line of every sale
- ** NEW ****
- Completely internal gift card tracking. No outside fees charged.

Spartan Software Inc.

New Scan Data / Loyalty Interfaces (included)

Mix and Match tobacco discounts

Merchandise Manager interfaces with Scan Data processors for cigarette / tobacco rebates. The processor pulls sales daily and validates them for store rebates.

This allows your store to offer discounts on tobacco that your competitors may not offer. The discounts are based on mix and matches so a combination of like products will qualify.

Drawer - 1 Salesperson: Customer: Cash Sale Balance: -\$224,898.56

Header | Shipping Info | Detail Lines | Totals

Item # Description UPC Save Delete
Quantity Price Disc %
Qty

Void Cancel Disc.

Item#	Description	Quantity	Price	Disc%	Amount	U/M
289652	MARLBORO 72'S GOLD BOX	1	6.09	0.00	6.09	
289622	MARLBORO 72'S MENTHOL BOX	1	6.14	0.00	6.14	
PROMO	Mix: 2 Qty: 2 Disc \$--0.50	1	-0.50	0.00	0.00	

Up

BEER	WINE	
ICE	CANDY	MISC TAXAB
Miscellaneous Non Tax	Coffee	black mild sin
black_mild FT 100 singl	Gas	Gas Refunc

Loyalty Card tobacco discounts

Merchandise Manager also offers a loyalty rewards program that interfaces with Scan Data processors.

Customers are provided a loyalty card that will give them additional discounts on tobacco products. Just scan the loyalty card or lookup the customer by phone number.

Drawer - 1 Salesperson: House Sales, Customer: amanda Balance: -\$2.00

Header | Shipping Info | Detail Lines | Totals

Item # Description UPC Save Delete
Quantity Price Disc %
Qty

Void Cancel Disc.

Item#	Description	Quantity	Price	Disc%	Amount	U/M
289652	MARLBORO 72'S GOLD BOX	1	6.09	0.00	6.09	
289622	MARLBORO 72'S MENTHOL BOX	1	6.14	0.00	6.14	
PROMO	Mix: 2 Qty: 2 Disc \$--0.50	1	-0.50	0.00	0.00	
LOYALTY	Loyalty Discount	1	-1.00	0.00	-1.00	

Up

BEER	WINE	
ICE	CANDY	MISC TAXAB
Miscellaneous Non Tax	Coffee	black mild sin
black_mild FT 100 singl	Gas	Gas Refun

New Customer Loyalty Rewards Program

INCREASE Foot Traffic with Loyalty Rewards

Allow your customers to earn free or discounted products when they frequently purchase an item. For example, purchase 9 cups of coffee and get the tenth cup free. This uses the same loyalty card as the Scan Data loyalty but is not specific to tobacco.



Merchandise Manager Pricing:

- Onsite Installation / Setup
- Includes a preset database with most inventory sold in convenient stores. You do not need to enter all of your inventory.
- Initial onsite training session to change your prices and to add any new inventory.
- Follow up training session to begin processing sales and closing for the day.
- Access to How To videos that provide all the directions for the most asked questions.
- Phone/remote support for assistance to your questions.
- Back Office software to allow reporting, Inventory changes, Purchase Orders and updates.
- Interface to the Scan Data processor.
(Note: The processor will have a monthly fee for their services)
- Interface to the Loyalty Program.
(Note: The first 2 months are included. There is a slight monthly fee for the service)
- **New 2021**
- **Age Verification**
Set any inventory item to require an age verification with a limit on the quantity. Scan Drivers License.
- **Cloud access to live sales**
View LIVE sales information from your smartphone (Android/iPhone)
- **Save and Retrieve a sale**
Great for phone in sales or when a customer needs to leave and return later.

Price based on the number of registers

	Software Purchase Price	Monthly Rate Software Only
1 Register	\$895	\$59.00
2 Registers	\$1,295	\$89.00
3 Registers	\$1,685	\$114.00

Call for more than 3 registers

Includes all hardware needed to start processing sales



Hardware pricing:

- POS-X or PosiFlex Touchscreen Terminal
- Star Thermal Receipt printer
- 2-D Barcode scanner / Driver's License Scan
- Cash drawer
- Keyboard / Mouse / cables for printer and cash drawer
- 5 port router with 6 ft. Ethernet cables
- 1 USB removable drive for disaster recovery backup

\$1,500.00

Per unit Plus tax

Monthly payment option Hardware and Software

Includes :

Phone Support, Online Support and Onsite Support when needed.

All new software updates.

Sales Tax is not included

Zero Dollars Down

1 Register

\$99.99 / plus tax

2 Registers

\$179.99 / plus tax





Automatic Credit Card Interface

Merchandise Manager interfaces with several credit card processors for real time automatic credit card verification.

Why select the Automatic Credit Card Interface?

ELIMINATE COSTLY ERRORS	The software will automatically process the credit card without your cashier manually entering the dollar amount in a separate device. One mistype can GREATLY hurt your profits.
SAVE MONEY Up to \$825 savings on your purchase!	Discounts are available on the initial software purchase, the initial credit card devices and yearly maintenance fees. You can save up to \$650 on the Merchandise Manager software and up to \$175 per credit card device.



Devices accept card swipe/ Chip / Apple Pay / Android Pay		
<h3>Credit Card Processing</h3> <div style="display: flex; justify-content: space-around;"> <div style="text-align: center;">  <p>Accept all payment types</p> <p>Make sure your customers can pay any way they want, whether it's with a rewards card, a mobile phone, or an EMV chip card.</p> </div> <div style="text-align: center;">  <p>Sell on demand</p> <p>Make it easy for customers to buy wherever they want including in-store, in-app, and online. You'll capture more revenue and loyalty.</p> </div> <div style="text-align: center;">  <p>Speed up checkout</p> <p>Bring the terminal to the customer so you can shorten lines, serve more customers and deliver an added touch to the checkout experience.</p> </div> </div>		

Spartan Software, Inc.

www.merchandisemanager.net

Call: **330.719.7157** Email: spartansoftware@zoominternet.net